



AAW OFFICIAL CHAPTER
AMERICAN ASSOCIATION
OF WOODTURNERS

<http://www.corridorturners.org/>

Next Meeting

The Next meeting of the Corridor Woodturners will be the annual Christmas party on Saturday, December 14 at the Antioch Christian church, 433 Cross Road, Marion IA. Open at 11:00 AM, eat at 12 noon with project showing and show and tell following. Meat and drink are provided by the clubs, bring something to share and your own table service. There will be no meeting on Thursday Dec 12th.

Upcoming Events

Regular Meeting-December-Christmas Party
December 14 at Antioch Christian Church

Regular meeting January 10-Food safe finishes.
@ MISD wood shop.

2020 Woodcarvers show TBD @ Kirkwood facility on Boyson road

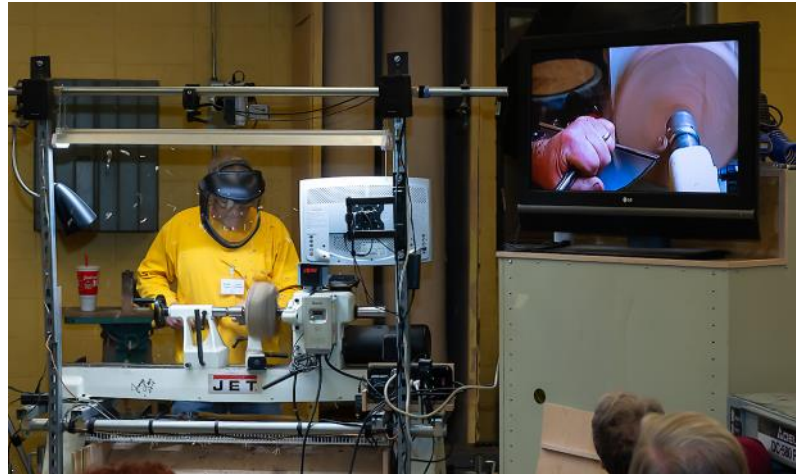
Dues for 2020

As we look toward a new year, the time to renew your membership is at hand. Please go to the web page and download the renewal form and present it and your payment to John Sandor at the January meeting or if you wish, mail the form and your payment to John at the address listed on the form. You have until the March meeting to get this done for the new year. The dues remain at \$25 per year or \$30 for a family. New membership cards for those who have paid will be included with your name tag at the March meeting. The membership card may be used for a discount at some stores that cater to woodturners, be sure to ask.

Last Meeting

There was some discussion about the exact title or description of the object of last months meeting, but no matter what you call it, a winged bowl, a natural edged bowl, or a birds mouth bowl, Brad Davis gave us a first class demo on making one.

Once Brad has decided on the project to make he makes



his decision on the design. Three factors influence his decision, (1) shape, with the golden mean foremost, (2) the wood, its figure and texture, and (3) the human factor, how will it feel when you hold it. The process begins with squaring up a half log and removing the pith. On the bark side find the center and use a forstner bit to drill through the bark to get to solid wood so that the spur drive will get a good bite. Balance the stock on the revolving center in the tail stock. Square up the tailstock end which will be the base of the bowl and then proceed to shape the sides of the bowl and form a tenon. Once this is done stop the lathe and look at what you have done so far. If the shape needs to be adjusted to get a symmetrical shape now is the time to get that done. The blank will have straight and side grain which will require smoothing. A shear scraping cut and sanding will finish the job. The blank is then reversed and put into a scroll chuck for hollowing on the inside. Brad uses a drill to determine what will be the interior bottom of the bowl and then begins to remove wood from the center of the bowl. Determine the wall thickness and begin removing sections starting from the outside edge. Brad cautions to introduce the bowl gouge parallel to the outside edge and proceed slowly removing only as much of the support wood as necessary on each pass. Because there is a great amount of air being turned speed will be helpful at this point. Once a section is turned to the desired wall thickness start to go deeper into the bowl and never go back and try to thin out the first section, or disaster will befall you. As you continue to hol-

Message from the President



Tom Nehl

Greetings all,

Tis the season to go crazy with last minute projects, shopping and parties to attend. Next Saturday, the 14th, will be our club and the woodcrafters Christmas Party at Antioch Christian Church on highway 13. The party will last from 11:00 - 3:00, we can use some help after 10:00 with setup and after for cleanup. The club has some really nice bowl blanks for gifts. For those of you in both clubs you will be able to sign in with both clubs. Food and drinks will be furnished you are asked to bring table service and a dish to pass.

The clubs new Laguna 12-16 lathe is a sweetheart of a lathe, we have it mounted on a stand but want to make a few additions before the Carvers and turners show in March. Hopefully we will have members who are willing to "take it for a spin" during the show.

The January meeting will be at the school with the demo being FOOD SAFE FINISHES. The project of the month will be natural edged bowls. Hope to see lots of examples after Brad's great demo last month.

Wishing all of you a Merry Christmas and Happy New Year. Stay safe through the holidays,

Tom Nehl

Last Month *Continued from page 1*

low, follow the outside shape and the wall thickness will be uniform. Determine the bottom, being careful not to go too deep. Sand and finish the inside. Reverse and use a pud in the chuck, shaped to the inside curvature of the bowl. A piece of soft leather or rubber shelf material over the pud will keep the bowl from slipping. Bring up the tailstock into the centering hole on the bottom and carefully finish the bottom and reduce the tenon to as small as possible. Stop the lathe and cut the remaining tenon free with a coping saw and sand off the remaining nub. Finish with your choice of finish.



Possible Future Programs

Tool Usage / Safety

4 Minute Finishes - Friction Polish Use

Incorporation LED Strip Lighting

Decorative Corner Molding

Carving Moderated Random Q & A

Potpourri Pots Wood Ring

Beads / Coves / Texturing Turning PVC

How to Build Woodburning Pens

Off Center Jigs

Captive Ring Techniques

Skew Sharpening / Types / Use

Gouge / Types / Uses Turning with Provenance

Casting Acrylic Rob Wallace Program

If you have an idea for a future program let one of the board members know and we will consider it. If you would like to provide a program on one of the ideas listed above let us know, we are always on the lookout for programs that the membership will find informative and add to their knowledge base.



Jim Clauson-Oak & Walnut-Lacquer-POM



Tom St John-Sharpening jig-S&T



Stacy Nehl-Basswood-Poly-S&T

M
E
M
B
E
R
S

G
A
L
L
E
R
Y



Ray Hamilton-S&T

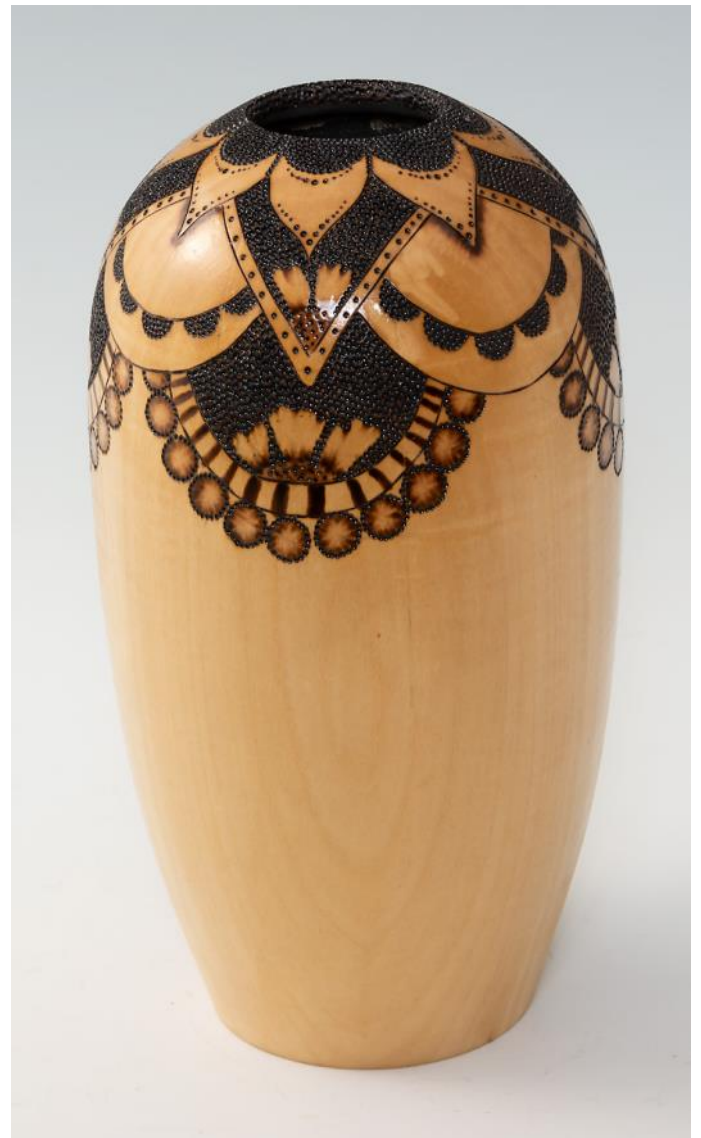


Bob Smiley-Ash-Tung Oil-S&T

Name -Wood - Finish - Category
Legend: AO=Antique Oil WOP=Wipe on Poly POM=Project of the month S&T=show and tell
BLO= Boiled Linseed Oil SB= Salad Bowl finish FOG=Found on Ground



Gerry Schuerer-Cherry, Padauk & Maple-Lacquer-S&T



Stacy Nehl-Basswood- poly-S&T



Don Coleman-Bloodwood-shellac-POM

M
E
M
B
E
R
S

G
A
L
L
E
R
Y



Ray Hamilton-S&T

Dues Structure and Meeting Attendance Policy

Club dues are:

\$25.00 per year for an General membership.

\$30.00 per year for a Family membership

\$100.00 per year for a Supporting membership.

Dues are for the calendar year January 1 thru December 31 with a grace period ending at the close of the February meeting. New membership cards will be distributed at the March meeting.

Dues paid in September and later by NEW members will be considered in force for the rest of that calendar year plus the following calendar year.

Potential members may attend two meetings as a guest then must either join the club or pay 1/4 of the current general membership fee to attend a regular meeting.

Library Information

Do you use the literature library? What items would you like to see added, what would make it easier to use? See Gary Nosek and make your wishes known.

What is your preference for new library additions, books or DVDs?

Remember to return items borrowed from the library so that others can use them.

For Sale

Have something for sale? Let the club members know about it here. Get the info to John Cox to be added to the next newsletter

M
E
M
B
E
R
S

G
A
L
L
E
R
Y



Stacy Nehl-Basswood-Poly-S&T