

<http://www.corridorturners.org/>

Facebook - corridor woodturners od Cedar Rapids

## Next Meeting

The Next meeting of the Corridor Woodturners will be held at 6:30 PM on Thursday May 9th at the Marion High School wood shop, 675 S. 15th St. Marion, Iowa

The program will be by Brad Davis on Wall hangings.

The project of the month will be napkin rings

## Upcoming meetings

**May,9 -Wall Hanging– Brad Davis**

**May, 18 Marion Arts Festival**

**June,13-Negative Rake Scrapers-Tom Mills**

**First Church of the Nazarene 3113 1st Ave SW**

**July,11– TBD**

**First Church of the Nazarene 3113 1st Ave SW**

**August 10, Picnic-Overlook pavilion at Ellis Park**

**September 12, Point Tool– John Cox**

**October 10, Inside out Turning-Gary Evarts**

## CWT Board of Directors

Tom Mills, president

TBD, vice-president

Don Coleman, treasurer

John Cox, secretary

Bruce Kruse, director-at-large

Bob Smiley, director-at-large

Emily van der Hoeven, director-at-large

Tom St. John, director-at-large

Jerry Potter, director at large

## Last Meeting

Bruce Kruse gave a demonstration on making napkin rings. What follows is his information and recap of the demo.

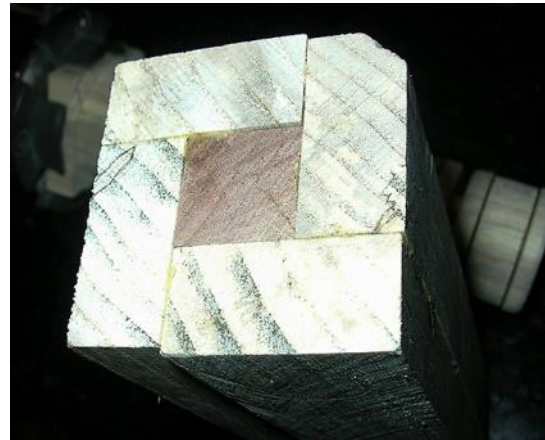
The process is the same for Napkin Rings, Bracelets or any round cylinder type of turning. It just depends on how many of the "rings" you desire to make, size and shape is up to the turner!!!

You can make the "rings" any width and shape or decorative style you desire.

Woodburn - Color - Texture - Whatever you want to do to make them unique or fit a décor.

For Napkin Rings you need to start with a spindle blank which can produce an outside diameter of approximately 2 Inches and length of blank of about 8 inches. If you don't have a blank of the correct size, you can glue up a blank as I did (as shown in pictures) with a 3/4 Inch center.

That Center will be drilled out later in the process. The 8 Inch long blank will allow you to chuck the blank plus have plenty of length to allow for 1 1/4" Ring width plus the 1/4" Parting length x the 4 Rings.



My concept is to turn a spindle to approximately 2 Inches in diameter. Then you can make 4 equal length

"Rings" which are approximately 1 1/4 Inches wide.

Make four equal width Rings. If you make any more than 4 rings of this length you run the risk of more vibration and running off true center on the blank. If you want 6 or 8 Rings of the same size, shape, etc. it is best to do this in two processes to lessen the length of the turning reducing the chance or vibration and running off center. I like to make the rings 1 1/4 Inches to 1 1/2 Inches in width (long). Diameter should be 1 3/4" to 2".

Part 1 inch deep to create four equal rings with about 3/16" to 1/4" between each ring. If you are making a single unit, like a bracelet, then make the width and diameter accordingly.

Make an template to use to pencil mark equal distance segments on each rings to embellish between. Burn in the vertical lines with laminate samples or a wire burner.

Create any patterns on to the rings between the index lines you placed on the diameter in the previous step. Embellish as you desire - wood burn, pierce, texture or color.

*Continued on page 6*

**President's message for May 2024**

County fairs, mowing grass and grilling brats. Hooray, summer is (almost) here. It's gonna be great.

Our next meeting is May 9, at 6:30. Brad Davis will demo his award-winning wall hangings.

He'll get those creative juices flowing in us.

Should be a memorable meeting.

The project of the month for the May 9 meeting will be the napkin rings that Bruce Kruse demonstrated. All POM entries get a ticket for a drawing for a gift certificate.

The empty bowls project for the Marion Arts Festival is May 18, 2024. It's just a few weeks away. The bowls you donate (see photo, above) will be sold at the Arts Festival, with proceeds split between Churches of Marion Food Pantry, Linn Community Food Bank, and Willis Dady Homeless Services. Bring your finished bowls to the meeting. For every bowl you bring to the May 9 meeting, you'll get a ticket for a drawing for one of the club's more premium bowl blanks. Bring more bowls, get more tickets. Interestingly, our experience has been that the larger, more expensive bowls at the Festival generate the most interest and sell the quickest. If your bowls can't make the meeting, send an email before May 17 to the club and we'll find a way to include your works.

If you have an idea for a topic for the monthly demonstrations, see any board member. Even better, if you'd like to do the demo, we're always looking for fresh faces.

---Tom Mills



Kevin Lurth-Maple-Wood bowl finish-S&T



Steve Bonny-Cherry & Fir-Lacquer-S&T



Tom St John-Wood?-POM

The POM( project of the month) this month was a toy

M  
E  
M  
B  
E  
R  
S  
  
G  
A  
L  
L  
E  
R  
Y



Jerry Potter-S&T

M  
E  
M  
B  
E  
R  
S  
  
G  
A  
L  
L  
E  
R  
Y



Harvey Jeck-Spalted Maple, Maple, Walnut-Oil  
-POM



Don Coleman-Wood?-Paint-POM



Dean Sherman-Cherry-POM



Harold Rosauer-Hard Maple-Colored pencil &  
Varnish-POM



Everett Collins-Hard Maple-S&T



Doug Nauman-Maple, Spalted Maple, Acrylic-  
WOP-POM



Bruce Kruse-Walnut-BLO-S&T

M  
E  
M  
B  
E  
R  
S  
  
G  
A  
L  
L  
E  
R  
Y



John Cox-Soft Maple-Bee's wax-POM

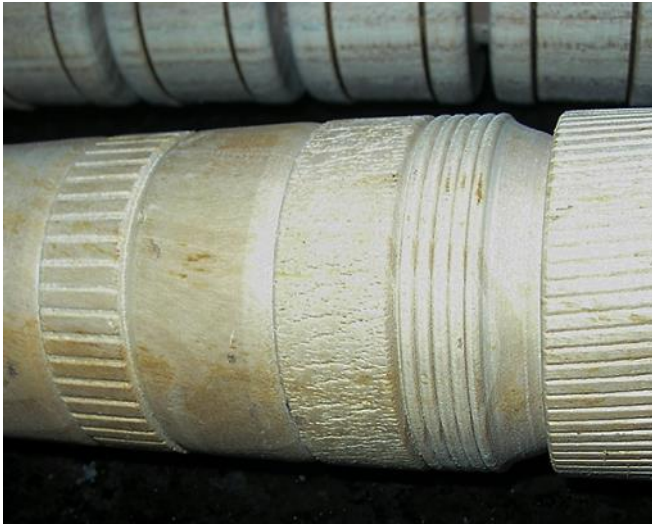
*Continued from page 1*



Rings ready for embellishing

Making the wall any thinner will make the "Ring" more prone to crushing or breaking. Carefully part or separate the individual "Rings" and sand the inside of the "Ring" using either a sanding cylinder or an oscillating Spindle sander. Use a jam chuck to finish each end of the "Ring". The jam chuck should be as shallow as possible to allow for finishing each end of the "Ring".

I was told that the "Ring" could be used as an EGG base as well. I have attached a picture to depict this use which will create another opportunity, to turn an egg.



Do this step before drilling out the center and sanding the interior of the "Ring".

**A finished product**

Drill out the center of the rings with a Forstner Drill Bit. Pick a bit to allow about a 1/4" wall (thickness) in the ring.



## **For Sale**

Have something for sale? Let the club members know about it here. Get the info to John Cox to be added to the next newsletter

## **Dues Structure and Meeting Attendance Policy**

Club dues are:

\$25.00 per year for an General membership.

\$30.00 per year for a Family membership

\$100.00 per year for a Supporting membership.

Dues are for the calendar year January 1 thru December 31 with a grace period ending at the close of the February meeting. New membership cards will be distributed at the March meeting.

Dues paid in September and later by NEW members will be considered in force for the rest of that calendar year plus the following calendar year.

Potential members may attend two meetings as a guest then we ask to either join the club or pay 1/4 of the current general membership fee to attend a regular meeting.